



**Interim Administrator**

Supervises:  
Deputy Administrator, RSB Bureau Chief  
(2), QI Manager

★ **Deputy Administrator  
Executive Officer 4**

Delegated Authority for Administrator Supervision  
Supervises:  
Bus Engage WPC (2), CRP WPC, Data Analyst, Fiscal Analyst, Sp Pr WPC,  
Info Specialist 2

▲ **RSB Bureau Chief  
PSM-2**

Supervises Team 1:  
Assistant Bureau Chief, Remote Team  
Counselors (3), Ames AO Sup, Council  
Bluffs Sup, Davenport AO Sup, Des  
Moines AO Sup (1) Dubuque AO Sup,  
Ottumwa Sup, Waterloo AO Sup

▲ **RSB Bureau Chief  
PSM-2**

Supervises Team 2:  
Admin Assist, Cedar Rapids Sup, Fort  
Dodge Sup, Iowa City Sup, Mason City  
Sup, Sioux City Sup, Des Moines 2 AO  
Sup (1) Transition WPC (2)

★ **QI Manager  
PSM-1**

Supervises:  
QI WPC (3), Exec Assist

▲ **Asst. Bureau Chief  
PSM-1**

Supervises:  
Benefits Counsel WPC, Training  
WPC, Statistical Assist, AT WPC,  
ISE Counselors (2), ISE Rehab  
Assist

**Spec Prgming WPC  
WPC**

**Data Analyst  
MA3**

**Bus Engage WPC  
WPC**

**QI WPC  
WPC**

**CRP WPC  
WPC**

**Training Specialist  
TS2**

**Benefits Plng WPC  
WPC**

**QI WPC  
WPC**

**QI WPC  
WPC**

**Assistive Tech WPC  
WPC**

**Fiscal Analyst  
BA4**

**Transition WPC  
WPC**

**Transition WPC  
WPC**

**Bus Engage WPC  
WPC**

**ISE Counselor  
Rehabilitation Counselor**

**ISE Counselor  
Rehabilitation Counselor**

**Remote Team Counselor  
Counselor**

**Remote Team Counselor  
Counselor**

**Remote Team Counselor  
Counselor**

**Statistical Assist  
Statistical Assist**

**Info Specialist 2  
Info Specialist 2**

## Area Offices

Ames (Team 1)  
Burlington (Team 1)  
Cedar Rapids (Team 2)  
Council Bluffs (Team 1)  
Davenport (Team 1)  
Des Moines (1) & (2)  
Dubuque (Team 1)

Fort Dodge (Team 2)  
Iowa City (Team 2)  
Mason City (Team 2)  
Ottumwa (Team 1)  
Sioux City (Team 2)  
Waterloo (Team 1)

\*\*Counselors and Assistants supervised by local Area Office Supervisors\*\*

**90/10**

IT (Developer)  
IT (Developer)

## Support

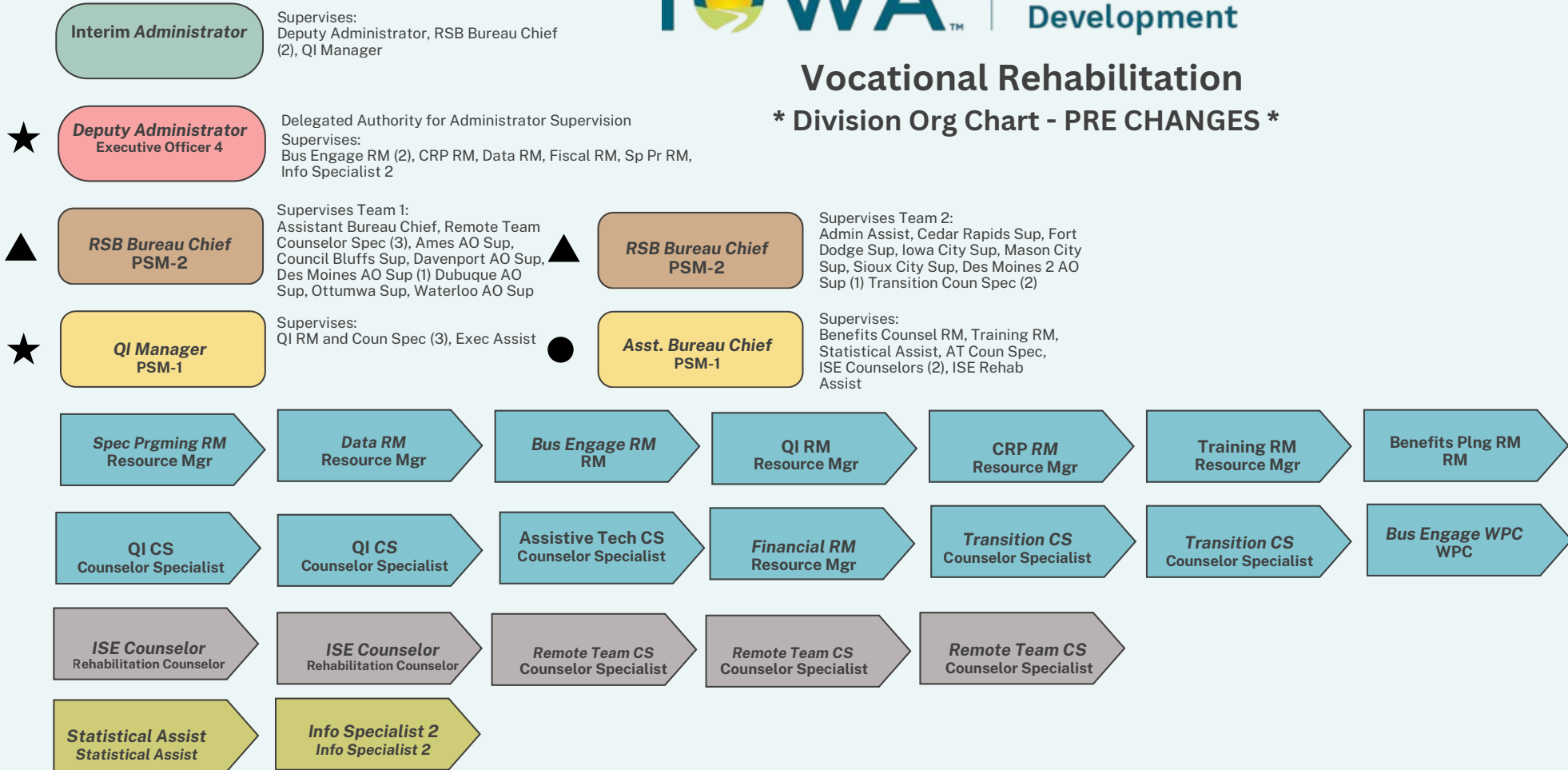
**Executive Assistant  
Admin Assist 2** ★

**Admin Assist  
Admin Assist 2** ▲



## Vocational Rehabilitation

### \* Division Org Chart - PRE CHANGES \*



### Area Offices

Ames (Team 1)  
Burlington (Team 1)  
Cedar Rapids (Team 2)  
Council Bluffs (Team 1)  
Davenport (Team 1)  
Des Moines (1) & (2)  
Dubuque (Team 1)

Fort Dodge (Team 2)  
Iowa City (Team 2)  
Mason City (Team 2)  
Ottumwa (Team 1)  
Sioux City (Team 2)  
Waterloo (Team 1)

\*\*Counselors and Assistants supervised by local Area Office Supervisors\*\*

### Support

**Secretary  
Secretary 2**

**Executive Assistant  
Admin Assist 2**

**Admin Assist  
Admin Assist 2**

**90/10**

IT (Developer)  
IT (Developer)